



## ECHOES 10000

THE ULTRA-HIGH RESOLUTION SUB-BOTTOM PROFILER

**ECHOES 10000** is an ultra-high resolution sub-bottom profiler designed for shallow water environments. It incorporates **iXBlue** flat spectrum Tonpiz ceramic transducers allowing unrivaled data delivery. Together with DELPH Seismic Acquisition, it is a full-feature survey tool with DELPH Interpretation high-productivity software, enabling missions to be achieved successfully and effortlessly.

### FEATURES

- True flat spectrum, high-directivity CHIRP Signal
- Full package: antenna, rugged rack, laptop PC
- Easy pole-mounted solution
- Databasing of all information
- Worldwide iXBlue network

### BENEFITS

- Unrivaled low-distortion data
- Stressless solution
- Quick mobilization
- Facilitated buried objects management
- 24/7 advice and support

**APPLICATIONS**

- Pre-dredging survey
- Environmental, coastal, ports, lakes, waterways survey
- Sedimentology
- Windfarms and renewable energy construction pre-survey
- Shallow water hydrographic survey
- Pipe, buried object detection
- Archeology
- Bridge, shoreline scour surveys



# ECHOES 10000

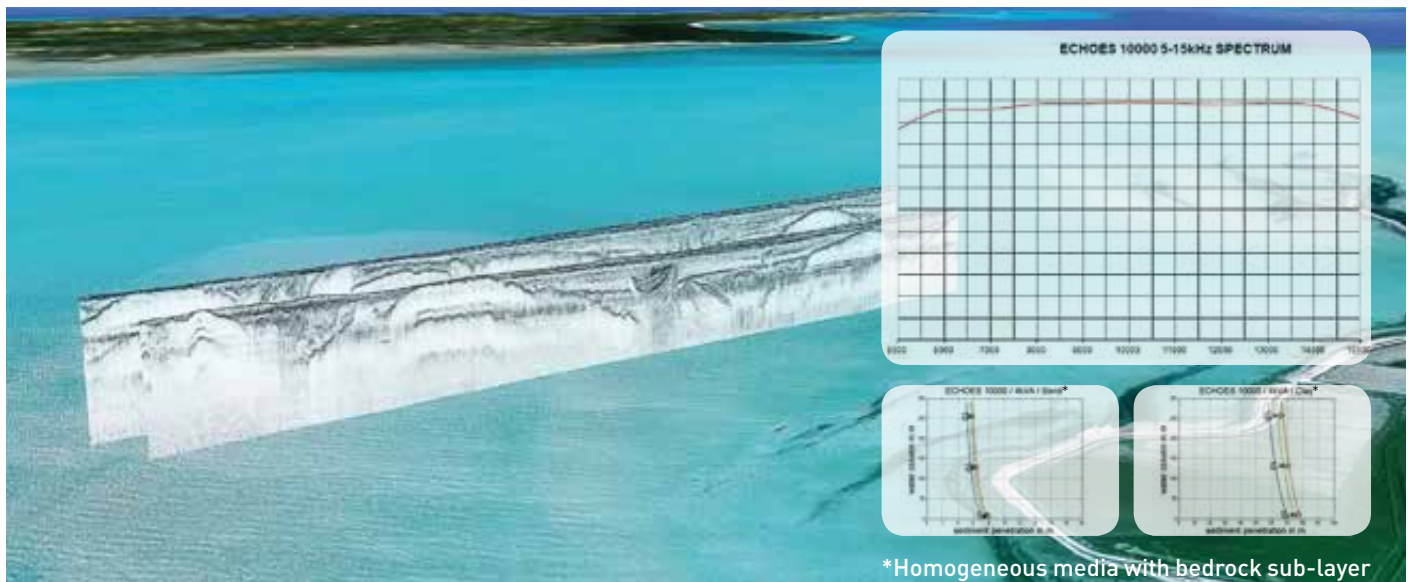
## TECHNICAL SPECIFICATIONS

### PERFORMANCE

Operational depth	Shallow water
Frequency range	5 – 15 kHz
Equivalent acoustic level (ref 1 $\mu$ Pa@1 m)	> 230dB within the useful bandwidth @ 2kVA
Resolution	<10 cm
Frequency response	Flat spectrum
Digital data format	24 bit raw data / Segy 32 bits floating point
Available pulses	User-designed and pre-defined chirp library
Directivity	20°, frequency dependent
Typical mount Pole-mounted / over the side	Pole-mounted / over the side
Transmission power 2 kVA (4 kVA option)	2 kVA (4 kVA option)

### PHYSICAL CHARACTERISTICS

Array configuration	7 Tonpitz transducers
Array dimensions ( $\emptyset$ x H)	$\emptyset$ 380 mm / H= 200 mm
Array weight in air / water	26 kg / 13 kg



Specifications subject to change without notice

www.ixblue.com • EMEA: +33 1 30 08 88 88 • AMERICAS: +1 888 600 7573 • APAC: +65 6747 4912

